



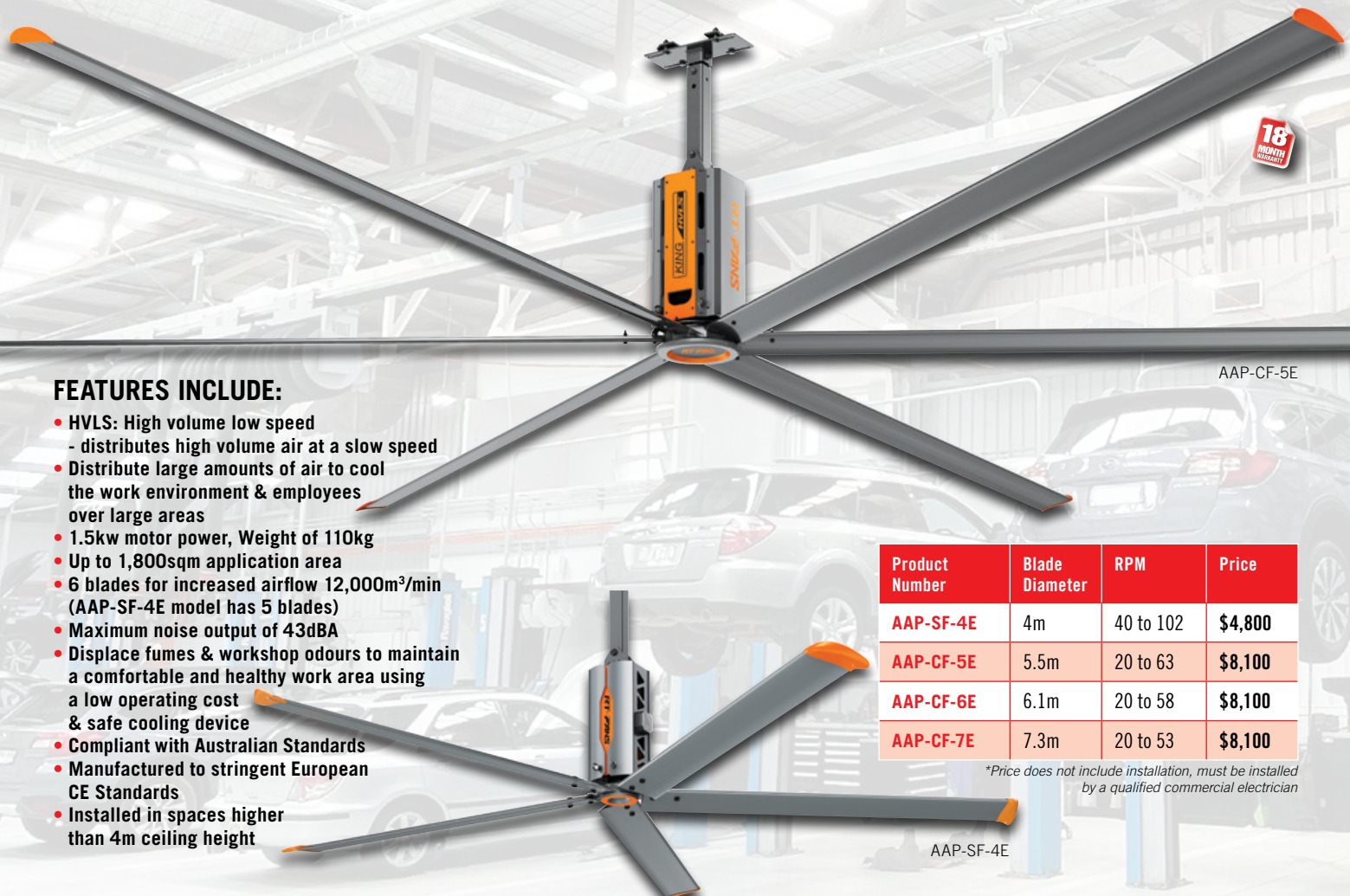
AUTOMOTIVE WORKSHOP

Equipment & Fitout Specials
1st Nov 2023 – 31st Jan 2024

NEW

Introducing

ALEMLUBE AUTOMOTIVE PREMIUM WORKSHOP CEILING FANS



FEATURES INCLUDE:

- HVLS: High volume low speed - distributes high volume air at a slow speed
- Distribute large amounts of air to cool the work environment & employees over large areas
- 1.5kw motor power, Weight of 110kg
- Up to 1,800sqm application area
- 6 blades for increased airflow 12,000m³/min (AAP-SF-4E model has 5 blades)
- Maximum noise output of 43dBA
- Displace fumes & workshop odours to maintain a comfortable and healthy work area using a low operating cost & safe cooling device
- Compliant with Australian Standards
- Manufactured to stringent European CE Standards
- Installed in spaces higher than 4m ceiling height

Product Number	Blade Diameter	RPM	Price
AAP-SF-4E	4m	40 to 102	\$4,800
AAP-CF-5E	5.5m	20 to 63	\$8,100
AAP-CF-6E	6.1m	20 to 58	\$8,100
AAP-CF-7E	7.3m	20 to 53	\$8,100

**Price does not include installation, must be installed by a qualified commercial electrician*

GREAT
COMBO DEALS
PAGE
3

SPEED PLATE ADAPTERS



AAP200.000.400A
AA Speed Plate Pro Balancing System P4

TYRE CHANGERS



AA201
AA Semi Automatic Swing Arm Changer P10

HOISTS & SCISSOR LIFTS



KPH370.45
Ravaglioli Electro-Hydraulic Hoist P6 to 9

SUPER SAVINGS

ALEMLUBE WORKSHOP EQUIPMENT CATALOGUE



*Applies to the vast majority of Alemlube products. All prices exclude GST and vehicle hoist installation costs.

Visit: alemlube.com.au

AA PREMIUM & AA AIR CON EQUIPMENT

AAP1000 Alemlube Automotive Premium Semi Automatic Air Conditioning Station

- Flow rates of up to 72L/min
- Internal receiver capacity 10kg
- Filter dryer capacity 50kg
- Refrigerant type - R134a
- Service hoses 2.5M
- Power: 1150VA
- Extensive database
- Manufactured in Italy

\$5,890 + INSTALL



AAP3000 Alemlube Automotive Premium Commercial Vehicle 4 in 1 Air Conditioning Station

- Flow rates of up to 142L/min
- Internal receiver capacity 32kg
- Filter dryer capacity 100kg
- Refrigerant type - R134a
- Absolute total final pressure of - 0.1mbar
- Operating temperature: +10oC to +50oC
- Power: 1200VA
- Manufactured in Italy

\$13,900 + INSTALL
or repayments of \$338 per month



AAP2000 Alemlube Automotive Premium Fully Automatic Air Conditioning Station

- Recovers, recycles, evacuates & recharges
- Flow rates of up to 142L/min
- Internal receiver capacity 20kg
- Filter dryer capacity 50kg
- Refrigerant type - R134a
- Electronic scales
- Service hoses 2.5M
- Power: 1250VA
- Extensive database
- Printer
- Manufactured in Italy

\$8,040 + INSTALL



FREE
AAACDR134A
Alemlube Automotive Electronic
Refrigerant Gas Leak Detector
with any machine
purchase

AAP5000R Alemlube Automotive Premium Fully Automatic Air Conditioning Station to suit R1234YF

- Recovers, recycles, evacuates & recharges
- Flow rates of up to 142L/min
- Internal receiver capacity 18kg
- Filter dryer capacity 50kg
- Refrigerant type - R1234YF
- Extensive database
- Service hoses 3M
- Electronic scales
- Printer
- Manufactured in Italy

\$8,040 + INSTALL



AAACDR134A Alemlube Automotive Air Conditioning Leak Detector

- Senses all R134a, R404A, R410A, R600A, R290, R407C, R22, R32 & HFO-1234yf refrigerants
- Detects leaks as small as 3g/year
- 7 LED tri-coloured visual leak level indicator
- 40cm flexible stainless probe

\$599 + INSTALL



RAVAGLIOLI, AA PREMIUM & AA COMBO DEALS

AA236A Alemlube Automotive 26" Tilt Back Tyre Changer with Helper Arm

- Pneumatically operated tilting column
- Automatic pneumatic right help arm device
- Tubeless tyre inflating device
- Large 26" turntable suitable for low profile tyres
- Maximum rim width 16" (406mm)
- Maximum tyre diameter 45" (1,143mm)
- Outside clamping: 12" - 23"
- Inside clamping: 14" - 26"
- Air supply: 8bar
- Bead breaker force: 2,500kg
- Weight of 345kg



AA579 Alemlube Automotive Automatic Wheel Balancer with LCD Monitor & Laser Pointer

- 17" LCD larger higher resolution
- Rim width measurements 1.5" - 20"
- Rim diameter measurements 10" - 24"
- Maximum Wheel Weight 65Kg
- Balancing accuracy +/- 1g
- 9 Balancing modes
- Equipped with LCD monitor, 3D animation interface, easy to read balancing operating modes, with innovative adhesive weight placement laser for accuracy & convenience



COMBO DEAL

\$8,465
+ INSTALL

AACOMBODEAL1: AA236A / AA579

HP643Q.26FI-A Ravaglioli Automatic Tyre Changer

- Automatic 26" 2 SPEED tyre changer
- High rear frame gives extra stiffness and compactness to the vertical post, which can be easily tilted
- The extra height of the vertical post & tool shaft allow easy servicing to any type of tyre to a maximum of 15" (381mm) width
- With PLUS83 helper arm
- Manufactured in Italy



G3.150 Ravaglioli Electronic Wheel Balancer

- New Modern Design
- 22" Colour Monitor with Graphics
- Rim Diameter 10" - 26"
- Rim Width 1.5" - 22"
- Maximum wheel weight 70KG
- Suitable for tyre shops, dealerships & General Workshops
- Manufactured in Italy



COMBO DEAL

\$19,750
+ INSTALL

RAVCOMBODEAL1: HP643Q.26FI-A / G3.150
Repayments of \$478 per month

SUPER SAVINGS WITH INSTALLATION & COMMISSIONING BY FACTORY TRAINED TECHNICIANS



NEW ALEMLUBE AA PREMIUM SPEED PLATE ADAPTERS & WHEEL BALANCERS

AAP206.005.400A

Alemlube Automotive Premium 4WD & SUV Balancing Speed Plate

- Speed plate 206 series covers 3/6 stud & all PCD's
- Solution for fast and accurate balancing large 4WD & SUV wheels
- Suitable for most wheel balancers with 40mm shaft
- Optimal balancing using less wheel weights saving \$\$\$
- Manufactured in the USA 🇺🇸

\$810 + INSTALL



18 MONTH WARRANTY

AAP204.001.400A

Alemlube Automotive Premium 4WD & SUV Balancing Speed Plate

- Speed Plate 204 series covers 4/8 Stud & All PCD's
- Solution for fast and accurate balancing large 4WD & SUV wheels
- Suitable for most wheel balancers with 40mm shaft
- Optimal balancing using less wheel weights saving \$\$\$
- Manufactured in the USA 🇺🇸

\$670 + INSTALL



18 MONTH WARRANTY

AAP200.000.400A

Alemlube Automotive Premium 3 Piece Speed Plate Pro Balancing System

- Speed plate pro covers, 3/4/5/6/8 stud & all PCD's
- Solution for fast and accurate balancing large 4WD & SUV wheels
- Suitable for most wheel balancers with 40mm shaft
- Does not include storage board
- Manufactured in the USA 🇺🇸

\$1,990 + INSTALL



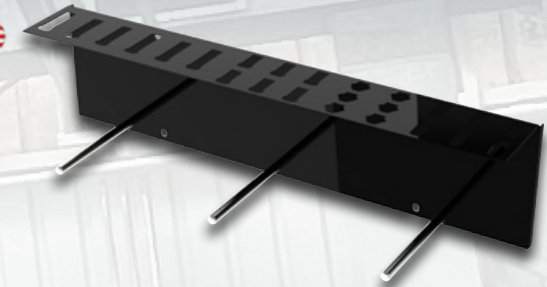
18 MONTH WARRANTY

AAP280.090.002A

Alemlube Automotive Premium Speed Plate Storage Board

- Optional wall mount speed plate storage board
- Keeps your speed plates tidy & at hand
- Manufactured in the USA 🇺🇸

\$210 + INSTALL



18 MONTH WARRANTY

AAPWB600

Alemlube Automotive Premium Wheel Balancer

- Rim width setting range: 1.5" – 20"
- Rim diameter setting range: 10" – 28"
- Single phase power supply 240V, 50/60Hz
- Measuring cycle for 15kg wheel: 4.7 seconds
- VDD Virtual Direct Drive for speed & accuracy
- Virtual Sonar for 3D measurements
- Maximum wheel weight of 75kg
- Balancing speed of 100 rpm
- 17" TFT flat screen
- Manufactured in Italy 🇮🇹

\$9,580 + INSTALL
or repayments of \$236 per month 🇮🇹



18 MONTH WARRANTY

G3.150

Ravaglioli Electronic Wheel Balancer

- 22" Colour Monitor with Graphics
- Rim Diameter 10" – 26"
- Rim Width 1.5" – 22"
- Maximum wheel weight 70KG
- Manufactured in Italy 🇮🇹

\$8,020 + INSTALL

Also Available **G3.150WS** as above but with laser blade for BDC placement of adhesive weights & width sonar for automatic rim width measurement

\$10,500 + INSTALL
or repayments of \$258 per month



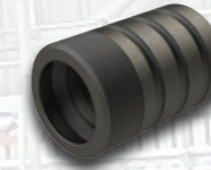
2 YEAR WARRANTY

AAP280.010.818A

Alemlube Automotive Premium Grip Handle for Balancers with 40mm Pneumatic Clamping Shaft.

- Clip Grip Type

\$100 + INSTALL

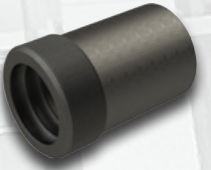


AAP280.010.589A

Alemlube Automotive Premium Grip Handle for Balancers with 40mm Pneumatic Clamping Shaft.

- Ball Grip Type

\$100 + INSTALL



AAPWB300

Alemlube Automotive Premium Wheel Balancer

- Rim width setting range: 1.5" – 20"
- Rim diameter setting range: 10" – 28"
- Single phase power supply 204V, 50/60Hz
- Balancing speed of 100 rpm
- Automatic gauge to measure the distance & diameter of rims
- AutoAdaptive Mode tolerance calculation system
- Maximum wheel weight of 75kg
- Manufactured in Italy 🇮🇹

\$5,090 + INSTALL



18 MONTH WARRANTY

AA579

Alemlube Automotive Automatic Wheel Balancer with LCD Monitor & Laser Pointer

- Rim width measurements 1.5" – 20"
- Rim diameter measurements 10" – 24"
- Maximum Wheel Weight 65Kg
- 9 Balancing modes
- Equipped with LCD monitor, 3D animation interface, easy to read balancing operating modes, with innovative adhesive weight placement laser for accuracy & convenience

\$3,690 + INSTALL



1 YEAR WARRANTY

SUPER SAVINGS WITH DIRECT ENQUIRIES TO THE AUSTRALIAN DISTRIBUTOR



RAVAGLIOLI & ALEMLUBE AUTOMOTIVE 2 POST HOISTS

KPH370.45 Ravaglioli 4.5t Electro-Hydraulic 2-Post Clear Floor Hoist

- 4,500kg lifting capacity
- Maximum lifting height 4,065mm or 4,165mm
- 3 different extensions height available on request from 3,625mm to 5,000mm
- Three-stage short arms & two-stage long arms provide asymmetric lifting of vans and off-road vehicles
- Each column features a maintenance-free lifting cylinder
- Includes top limit switch safety bar, door protectors, 4WD spacers & spacer holders
- Manufactured in Italy

\$8,950 + INSTALL



KPN349WEK Ravaglioli 4.2t Electro-Mechanical 2-Post Clear Floor Vehicle Hoist

- Lifting capacity of up to 4,200kg
- Superior lifting height of 2,020mm
- 3-stage short arms and 2-stage long arms
- Synchronised alignment within 20mm
- Width between columns of 2,650mm
- Hoist height: 3,873mm
- Hoist width: 3,420mm
- Manufactured in Italy

\$10,440 + INSTALL
or repayments
of \$257 per month



KPH370.45LIKA Ravaglioli 4.5t Electro-Hydraulic 2-Post Clear Floor Hoist with Long Arms

- 4.5 tonne lifting capacity
- Hoist width 3,340mm
- Equipped with four long three-stage arms: ideal to lift long wheel base vans & easy loading of cars
- Includes top limit switch safety bar, door protectors, 4WD spacers & spacer holders
- Manufactured in Italy

\$11,000 + INSTALL
or repayments
of \$270 per month



KPX357EV Ravaglioli EV 3.5t Electro-Mechanical 2-Post Clear Floor Vehicle Hoist

- Versatile lifting of all vehicle types, EV & conventional
- Lifting arms can operate either straight or tilted up to 90°
- Minimal arm space requirement allows obstacle-free underbody work on wheels, brakes and suspension
- 3-stage arms with quick fit and telescopic rubber pads.
- Electronic synchronisation.
- Manufactured in Italy

\$13,140 + INSTALL
or repayments
of \$321 per month



AA50CF2PN Alemlube Automotive 5.0t Electro-Hydraulic 2-Post Clear Floor Vehicle Hoist

- Lifting capacity of 5,000kg
- Lifting height 1,900mm
- Minimum pad height 110mm
- Post height 4,420mm
- Includes 4WD extension
- Ideal for light commercial vehicles

\$6,400 + INSTALL

AA50CF2PN-240V
also available



AA40CF2P Alemlube Automotive 4.0t Electro-Hydraulic 2-Post Clear Floor Vehicle Hoist

- 4,000kg Lifting capacity
- Maximum lifting height of 1,900mm
- Minimum lowered height of 100mm
- Standard height clearance of 3,900mm
- Fast lifting time of 60 seconds
- Fast descent time of 18 to 40 seconds
- Distance between columns of 2,760mm
- Drive through width of 2,640mm
- Includes 4WD extensions

\$4,870 + INSTALL

AA40CF2P-240V
also available



AA402-240V Alemlube Automotive 4.0t Electro-Hydraulic 2-Post Clear Floor Vehicle Hoist

- 240V single phase operation
- Lifting capacity of 4,000kg
- Maximum lifting height of 2,000mm
- Minimum lowered height of 110mm
- Fast lifting time of 60 seconds
- Fast lowering time of between 18 to 40 seconds
- 100mm 4WD spacers included
- Standard height clearance of 3,950mm with overall height of 4,140mm

\$3,700 + INSTALL



AA40FB2P Alemlube Automotive 4.0t Electro-Hydraulic 2-Post Floor Base Vehicle Hoist

- Lifting capacity of 4,000kg
- Lifting height of 1,900mm
- Inside column height of 2,824mm
- Post height of 2,826mm
- 115% dynamic loading & 150% static loading test

\$4,690 + INSTALL

AA40FB2P-240V also available



SUPER SAVINGS WITH NATIONWIDE AFTER SALES SERVICE & FOR TECHNICAL SUPPORT CALL 1300 159 311



RAVAGLIOLI & ALEMLUBE AUTOMOTIVE 4 POST HOISTS & SCISSOR LIFTS

RAV4401 Ravaglioli

4.0t Electro-Hydraulic 4-Post Vehicle Hoist

- Adjustable platforms to accommodate varying vehicle widths
- Automatic mechanical back up safety devices with pneumatic release allow for stationary operation with loaded cables
- Immediately triggered safety stud devices operate in the event of a cable slackening or failing
- An automatic anti-toe trapping alarm during the final stages of vehicle hoist decent supplied standard
- Manufactured in Italy

\$11,750 + INSTALL
or repayments of \$288 per month

Also Available RAV4402 4.0t 4-Post Wheel Alignment Hoist

\$14,440 + INSTALL
or repayments of \$352 per month



RAV4501L Ravaglioli

5.0t Electro-Hydraulic 4-Post Vehicle Hoist

- Long 5,700mm platform with adjustable width
- Automatic mechanical backup safety devices with pneumatic release
- Automatic anti toe trap alarm during final stages of lift descent
- Mechanical, electrical & hydraulic safety devices in compliance with the prevailing standard for CE marking
- Manufactured in Italy

\$15,920 + INSTALL
or repayments of \$388 per month

Also Available RAV4502L Extra-long platforms for total wheel alignment with front turning plates locations and rear slip plates

\$20,790 + INSTALL
or repayments of \$504 per month



RAV535 Ravaglioli

3.5t Low Profile Full Rise Scissor Lift

- Minimum height 100mm
- No cross rails or torsion bars between the lifting platforms ensures clear access to the underside of the vehicle
- Mechanical Lock – Mechanical locking device with automatic engagement & pneumatic release, ensuring maximum safety when lift is in standing position
- Ideal for space saving in small, medium or large workshops
- Manufactured in Italy

\$14,550 + INSTALL
or repayments of \$355 per month



RAV1450N Ravaglioli

3.2t Mid-Rise Scissor Lift

- The ideal lift for servicing tyres, brakes, suspension & bodywork
- Low voltage controls (24V); 2.6kW motor & 85psi (6bar) air pressure
- All pivot points fitted with self lubricating bushings for long life
- This lift of the latest generation has the following features: electro-hydraulic operation, high loading capacity & elevated lifting height, rapid cycle times
- It guarantees the user maximum safety & practical and convenient usage
- A mechanical levelling system assures constantly level lifting platforms regardless of weight distribution
- Manufactured in Italy

\$8,050 + INSTALL



AA454PAN

Alemlube Automotive 4.5t 4-Post Alignment Hoist

- Heavy duty lifting capacity of 4,500kg
- Maximum lifting height of 1,896mm
- Minimum lowered height of 246mm
- Overall length of 6,288mm
- Overall width of 3,342mm
- Width between columns of 2,742mm
- Conventional 4-post hoist designed for general under vehicle service & specialist exhaust system operations

\$8,730 + INSTALL



AA101P

Alemlube Automotive 1.0t Single Post Vehicle Hoist

- Load capacity of 1,000kg
- 240V single phase power supply
- Hydraulic cylinder lifting mechanism
- Maximum lift height of 1,750mm
- Each platform measures 350mm wide
- Platform length of 1,850mm with ramps 2,010mm
- Maximum platforms adjustable width setting: 1,500mm
- Minimum platforms adjustable width setting: 1,060mm
- Overall hoist height of 2,826mm
- Overall hoist length of 2,395mm

\$3,860 + INSTALL



AA35S

Alemlube Automotive 3.5t Low Profile Full Rise Scissor Lift

- 3,500kg lifting capacity
- Lifting height 1,930mm
- Minimum lifting height 105mm
- Lifting time 60 seconds
- Lowering time 20 seconds
- Available in single phase or three phase
- Platform size 1,485mm x 2,035mm x 660mm
- Available in 3 phase or 240V
- 4 x Reinforced oil cylinders with German seals
- Weight 820kg

\$6,290 + INSTALL

Also Available AA35S-240V



AA35MRS

Alemlube Automotive 3.5t Low Profile Mid Rise Scissor Lift

- 3,500kg lifting capacity
- Lifting height 1,000mm
- Minimum lifting height 105mm
- Lifting time 40 seconds
- Lowering time 20 seconds
- Platform size 1,400mm x 1,974mm x 480mm
- 4 x Reinforced oil cylinders with German seals
- 240V 15AMP
- Weight 650kg

\$4,920 + INSTALL



SUPER SAVINGS WITH ONWARDS & UPWARDS WITH RAVAGLIOLI & ALEMLUBE AUTOMOTIVE HOISTS



RAVAGLIOLI & ALEMLUBE AUTOMOTIVE TYRE CHANGERS

AA201 Alemlube Automotive Semi Automatic Swing Arm Tyre Changer

1 YEAR WARRANTY

- Semi automatic side swing arm
- Large 24" turntable suitable for low profile tyres
- Shovel with blade protector ensures bead breaking without damaging the rim or tyre
- Maximum rim width 14" (355mm)
- Maximum tyre diameter 39" (1,000mm)
- Air supply 116psi (8bar)
- 12" - 24" internal clamping & 10" - 21" external clamping
- Space saving design

\$2,075 + INSTALL



AA221A Alemlube Automotive 24" Tilt Back Tyre Changer

1 YEAR WARRANTY

- Fully automatic pneumatic tilting column
- Pneumatic locking of both vertical and horizontal distance
- Large 24" turntable suitable for low profile tyres
- Maximum rim width 14" (355mm)
- Maximum tyre diameter 39" (1,000mm)
- 12" - 24" internal clamping & 10" - 21" external clamping
- AA006 helper arm also available separately

\$2,960 + INSTALL



AA226A Alemlube Automotive 24" Tilt Back Tyre Changer with Helper Arm

1 YEAR WARRANTY

- Fully automatic pneumatic tilting column
- Tubeless tyre inflating device
- Large 24" turntable suitable for low profile tyres
- Maximum rim width 14" (355mm)
- Maximum tyre diameter 41" (1,040mm)
- High strength alloy pedal

\$4,320 + INSTALL

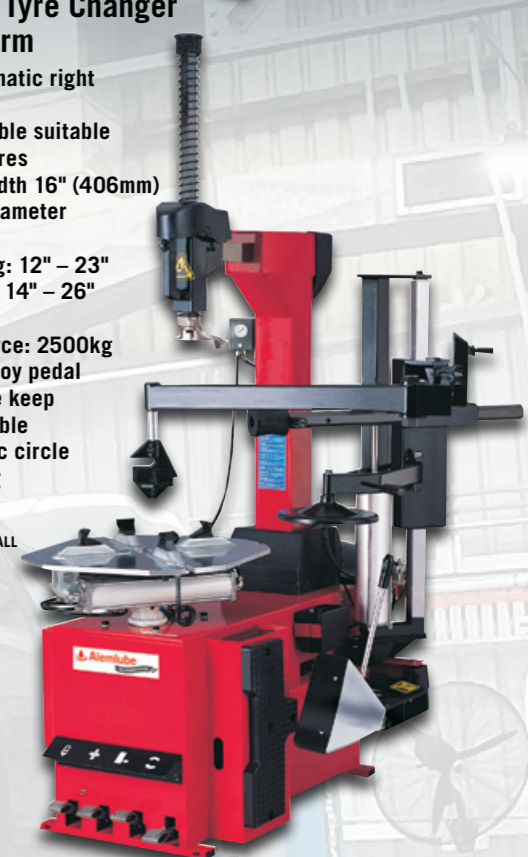


AA236A Alemlube Automotive 26" Tilt Back Tyre Changer with Helper Arm

1 YEAR WARRANTY

- Automatic pneumatic right help arm device
- Large 26" turntable suitable for low profile tyres
- Maximum rim width 16" (406mm)
- Maximum tyre diameter 45" (1,143mm)
- Outside clamping: 12" - 23"
- Inside clamping: 14" - 26"
- Air supply: 8bar
- Bead breaker force: 2500kg
- High strength alloy pedal
- Centering device keep the tyre & turntable in one concentric circle
- Weight of 345kg

\$5,220 + INSTALL



AAPTC26HA Alemlube Automotive Premium 26" Tilt Back Tyre Changer

18 MONTH WARRANTY

- Internal clamping capacity of 10" - 26"
- Maximum tyre diameter 43" (1,092mm)
- Maximum rim width 15" (381mm)
- 2 position adjustable jaws
- Double speed system with pedal control
- Includes Helper Arm
- Under table inflation

\$10,850 + INSTALL
or repayments of \$266 per month



HP643Q.26FI-A Ravaglioli Automatic Tyre Changer

2 YEAR WARRANTY

- With PLUS83 helper arm
- Automatic 26" 2 SPEED tyre changer
- High rear frame gives extra stiffness & compactness to the vertical post, which can be easily tilted
- The extra height of the vertical post & tool shaft allow easy servicing to any type of tyre to a maximum of 15" (381mm) width
- Manufactured in Italy

\$12,750 + INSTALL
or repayments of \$312 per month



G8945ITV.26S Ravaglioli Lever-less Tyre Changer

2 YEAR WARRANTY

- Post with vertical "space saver" movement
- Powerful tool memory, returning back to rim edge position
- Ideal for HP and RFT tyres, centre mounting preventing rim damage
- Powerful tubeless tyre inflation system suitable for any rim diameter.
- Maximum rim width 15" (381mm)
- Maximum tyre diameter 45" (1,143mm)
- Manufactured in Italy

\$16,490 + INSTALL
or repayments of \$402 per month

AA50CF2PN-240V
also available



G1250.30PLUSIT Ravaglioli Lever-less Tyre Changer with Helper Arm & Wheel Lift

2 YEAR WARRANTY

- Minimum clamping capacity 10"
- Maximum clamping capacity 30"
- Maximum rim width 15"
- Maximum wheel diameter 1,194mm
- Dimensions: 1,760mm (W) x 2,100mm (D) x 2,090mm (H)
- Manufactured in Italy

\$39,990 + INSTALL
or repayments of \$960 per month



SUPER SAVINGS WITH EXTENDED WARRANTY WHEN INSTALLED BY ALEMLUBE TECHNICIANS



RAVAGLIOLI & AA PREMIUM & ALEMLUBE AUTOMOTIVE WHEEL ALIGNERS

RAVTD3200HPR.3 Ravaglioli Premium 3D Wheel Aligner

2
YEAR
WARRANTY

- Exclusive 3D targets, extremely light, no electronic components inside & no maintenance required
- Equipped with tyre grabbing 3 point quick clamps to avoid run out compensation
- Suits any 4 post hoist or alignment scissor lift
- Manufactured in Italy 🇮🇹

\$36,990 + INSTALL
or repayments of \$891 per month

RAVTD3200SP.3 Ravaglioli 2ND Generation 3D Wheel Aligner

2
YEAR
WARRANTY

- New Modern Compact Design suitable for workshops where space is limited
- Exclusive 3D targets, extremely light, no electronic components inside & no maintenance required
- Equipped with tyre grabbing 3 point quick clamps to avoid run out compensation
- Manufactured in Italy 🇮🇹

\$30,250 + INSTALL
or repayments of \$730 per month

AAWA8CCD Alemlube Automotive Wheel Aligner

1
YEAR
WARRANTY

- Large 24" LCD screen
- Bluetooth transmission between the front heads & the cabinet
- 90,000 vehicle data start database
- No runout required when using STDA95E Quick Clamps
- Full customer database

\$14,700 + INSTALL
or repayments of \$358 per month



NEW

\$POA

18
MONTH
WARRANTY

AAPWA8CCD Alemlube Automotive Premium 8CCD Wheel Aligner

18
MONTH
WARRANTY

- Infra-red transmission among measuring heads
- Bluetooth transmission between measuring heads & control unit
- Large 24" LCD display
- Fast Run Out compensation
- Manufactured in Italy 🇮🇹

\$17,250 + INSTALL
or repayments of \$419 per month

AAPWA3D Alemlube Automotive Premium 3D Wheel Aligner

18
MONTH
WARRANTY

- Compact targets with no electronics & batteries
- Comprehensive wheel alignment software & database
- Large 27" LCD display
- Compact console
- Ergonomic design & easy accessibility during maintenance operations

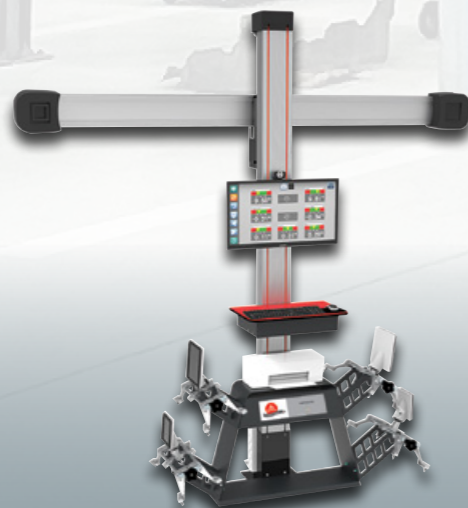
\$19,970 + INSTALL
or repayments of \$484 per month

RAV3D2.0WALL3S Ravaglioli All On Wall Series 3D Wheel Aligner

2
YEAR
WARRANTY

- Set of 4 self-centring 3-point clamps requiring no compensation
- Long lasting Batteries with 8 hours use
- Wall mounted console supports measuring heads, batteries & tablet
- Batteries & tablet are charged on wall mounted console
- Wall mounted brackets support wheel clamps & targets when not in use
- Manufactured in Italy 🇮🇹

\$26,100 + INSTALL
or repayments of \$631 per month



MEASUREMENTS IN A BLINK

The new ARGOS TOUCHLESS WHEEL ALIGNMENT SYSTEM from Alemlube will improve workshop efficiencies dramatically & increase your business by saving time

- Measuring in a blink - Measure toe and camber in less than 5 seconds
- Measuring process automatically starts at the arrival of the vehicle
- Instant touchless measurement without exiting the vehicle
- No manual adjustments for cars with different wheelbases
- No brake pedal required to measure caster
- Automatic locking & unlocking turntables
- No obstructions around lift or wheels
- No moving parts, no bulky cabinet
- Remote vehicle specs selection
- No clamps, targets or sensors
- Rim run-out not compulsory
- No need to remove hubcaps
- Fitting to every type of lift or pit for touchless wheel alignment.
- Camera support for the positioning of vehicles on the turntables
- Eliminate any effort and time for aligner's measurements
- Remote software control & measurements visualisation
- Automatic pre-selection of vehicles' specifications
- Thorough check all your customers' vehicles
- Find out more vehicles that need adjustments
- Increase turnover & customers' satisfaction
- Manufactured in Italy 🇮🇹



SUPER SAVINGS WITH PROMPT & EFFICIENT SUPPLY & INSTALLATION CAPABILITIES



ALEMLUBE AUTOMOTIVE MISCELLANEOUS EQUIPMENT

AAPBL9000

Alemlube Automotive Premium Off Car Disc & Drum Brake Lathe

- Centralised control box for easy operation
- Multi-functional drawer makes it easy to store accessories
- Built-in inverter provides easy control of rotation speed & drum diameters of 500mm
- Special fabrication of integral arbor shafts reduce machine tolerances
- Slide discharge method allows easy discharge of chips without removing the cap.
- One-touch switching between automatic & manual
- Manufactured in South Korea

\$12,080 + INSTALL
or repayments of \$296 per month



18 MONTH WARRANTY

NEW

AAHA90

Alemlube 9L Bead Inflation Blaster

- Air volume of 9L
- Maximum air pressure of up to 145 psi (10 bar)
- Normal air pressure of up to 116 psi (8 bar)
- Push button trigger allows technician to keep both hands on the tank for more control
- Seamless thick air tank that is durable & safe
- Made for run flat & low profile tyres
- Anti vibration oil filled pressure gauge
- Lightweight at 4.2kg

\$500 + INSTALL



1 YEAR WARRANTY

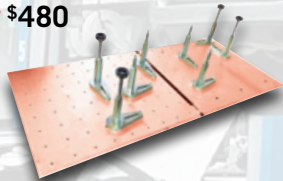
AA49010

Alemlube Automotive 1.2t Lifting Table

- Capacity 1,200kg
- Rest Height 480mm
- Lifting Height 1,810mm
- Platform Width 770mm
- Platform Length 1,300mm
- Pneumatically Operated

\$4,110 + INSTALL

Also Available
AA49010-MG15F \$480



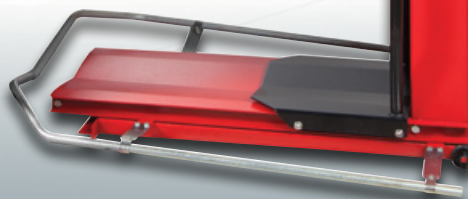
1 YEAR WARRANTY

AA476

Alemlube Automotive Pneumatic Wheel Balancer Wheel Lift

- Lifting height of 300mm
- 65kg Maximum wheel weight / lift capacity.
- Working pressure 8-10 bar
- Maximum lift height of 486mm
- Solid steel construction.
- Pneumatic lift via toggle switch.
- Ideal for light vehicles & heavy 4WD wheels.
- Designed for use with most wheel balancers in use today.
- Powder coated finish
- Air operated

\$1,120 + INSTALL



1 YEAR WARRANTY

AA48020

Alemlube Automotive Battery Operated Wheel Lift

- Maximum lifting weight 80kg
- Lifting height 0 to 1.2m
- Lifting time 12 to 16 seconds
- Lifting precision of 2mm
- Lifts per charge 150 to 200
- Dimensions: 700mm (W) x 740mm (D) x 1,630mm (H)

\$2,090 + INSTALL



1 YEAR WARRANTY

NSW/ACT (02) 9677 1555 | QLD/PNG (07) 3491 2600 | VIC/TAS (03) 8787 8288 | WA (08) 9302 4199 | SA/NT (08) 8241 7111

All prices exclude GST and vehicle hoist installation costs. Delivery and freight charges apply. Repayments paid monthly over 60 months, excluding GST. To approved applicants subject to normal credit criteria. Alemlube will do everything possible, within reason to maintain stocks of products advertised but cannot be responsible for unforeseen shortfalls beyond their control.

info@alemlube.com.au | www.alemlube.com.au

E&OE Prices & Specifications subject to change without prior notice © 2023 Alemlube Pty Ltd AWE&FS 1123