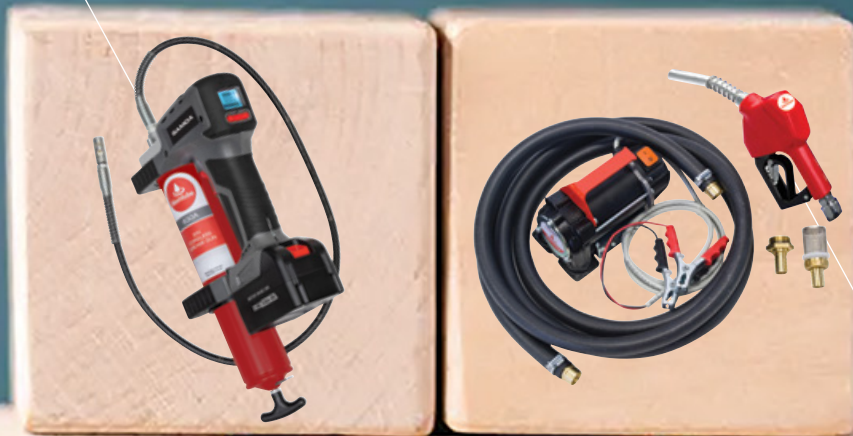


MAKING THINGS HAPPEN

1st March - 30th April 2024



Greasing



Workshop Pumps

Fuel Storage,
Transfer & Metering



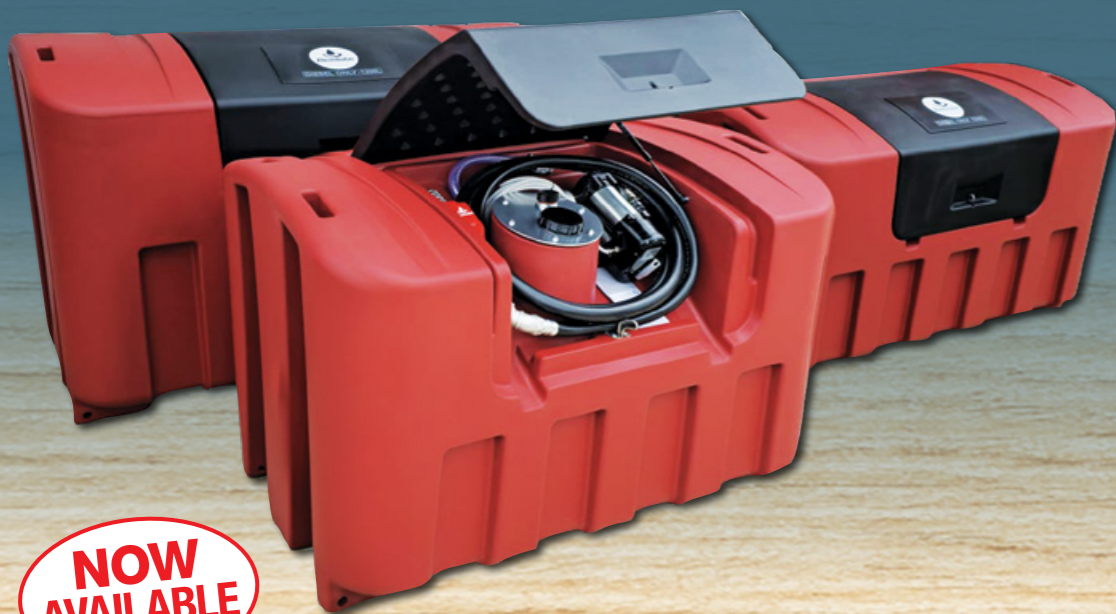
Hose, Cable & Barrier Reels

Lubrication Systems



*Applies to the vast majority of Alemlube products unless indicated otherwise

MAKING THINGS HAPPEN with Refuelling Equipment



NOW AVAILABLE



ALEMLUBE Large Lockable Diesel Refuelling, Storage & Dispensing Kits

- Australian made, heavy duty, robustly constructed polyethylene tank
- Flow rates of up to 80L/min on the high flow models
- Flow rates of up to 40L/min on the standard flow models
- Dispensing kits consists of a Piusi 12V pump, 4m antistatic fuel delivery hose, 2m battery cables & automatic shut off fuel nozzle
- Self-priming Piusi 12V electric pump with on/off switch & 2 year warranty
- Unique user friendly design with lockable lid to aid diesel fuel & dispensing kit security
- Internal baffles aid tank stability
- Forklift lift points & tie down capability
- Suitable for storing & dispensing diesel fuel only

Dimensions
 L1200: 1,700mm (W) x 1,100mm (H) x 999mm (D)
 L1000: 1,700mm (W) x 950mm (H) x 999mm (D)
 L800: 1,420mm (W) x 950mm (H) x 999mm (D)

Part Number	Capacity	Flow Rate	Price
L120080PA	1,200L	80L/min	\$3,815.00
L120080PAM	1,200L	75L/min	\$4,065.00
L100080PA	1,000L	80L/min	\$3,465.00
L100080PAM	1,000L	75L/min	\$3,980.00
L80080PA	800L	80L/min	\$3,285.00
L80080PAM	800L	75L/min	\$3,710.00
L120040PA	1,200L	40L/min	\$3,385.00
L120040PAM	1,200L	40L/min	\$3,635.00
L100040PA	1,000L	40L/min	\$3,035.00
L100040PAM	1,000L	40L/min	\$3,280.00
L80040PA	800L	40L/min	\$2,860.00
L80040PAM	800L	40L/min	\$3,105.00

ALEMLUBE Lockable Diesel Refuelling, Storage & Dispensing Kits

- Australian made, heavy duty, robustly constructed polyethylene tank
- Dispensing kit consists of a 12V pump, antistatic fuel delivery hose, 2 metre battery cables & auto nozzle
- Delivery rates of up to 40L/min
- 100L to 600L storage tank capacity
- Recesses for tie down straps on the tank aid handling
- Unique user-friendly design with lockable lid to aid fuel & dispensing kit security
- Auto shut off fuel nozzle
- Built in nozzle holster
- Suitable for storing & dispensing diesel fuel only

Dimensions
 L600: 1,000mm (W) x 1,110mm (H) x 850mm (D)
 L450: 1,000mm (W) x 855mm (H) x 850mm (D)
 L200: 1,000mm (W) x 720mm (H) x 570mm (D)
 L100: 690mm (W) x 720mm (H) x 570mm (D)

Part Number	Capacity	Flow Rate	Price
L10040PA	100L	40L/min	\$1,185.00
L10040PAM	100L	40L/min	\$1,390.00
L20040PA	200L	40L/min	\$1,272.00
L20040PAM	200L	40L/min	\$1,470.00
L45040PA	450L	40L/min	\$1,735.00
L45040PAM	450L	40L/min	\$1,940.00
L60040PA	600L	40L/min	\$1,890.00
L60040PAM	600L	40L/min	\$2,095.00



52007
Alemlube
1" Manual Diesel Fuel Nozzle

- Flow rates up to 150L/min
 - Suitable for gravity feed applications & applications with pressures of up to 140psi (10bar)
 - 1" BSP(f) swivel included
- 52155 as above but for unleaded petrol \$67.50



52000
Alemlube
12V Diesel Refuelling Tank Kit

- Flow rates of up to 50L/min
 - Includes 4m of antistatic fuel delivery hose, 2m of battery cable, a stainless steel & brass fuel filter and a manual nozzle
- 52000A as above but with auto shut-off nozzle \$760.00



501A
Alemlube
Rotary Action Drum Pump

- Delivery rates of up to 18L/min or 0.26L per rotation
- Includes 2.2m of anti-static hose, bung adaptor, rubber gasket, a four chamber rotor assembly, spout & spout holster
- Suitable for the transfer of diesel, petrols, kerosene, lube oil & machine oil



5060AN
Alemlube Heavy Duty
Hi-Flo Refuelling Drum Pump

- Delivers up to 110L/min
- Supplied complete with 2.6m of anti-static hose, spout, in built spout holster, 3-piece downtube which suits 60L & 205L drums and IBC's, & heavy duty bung adaptor
- Suitable for the transfer of diesel fuel, petrol, light oils up to SAE30 & kerosene



52004-3AC
Piusi 12V
High Flow Diesel Transfer Pump

- Flow rates of up to 85L/min
 - Powerful self-priming, rotary vane, positive displacement bi-pump
 - 1" BSP(f) flanged connections
 - Duty cycle of 30 minutes on / 30 minutes off
- 52005-3AC as above but 24V \$972.00



51039
Alemlube
1" Auto Shut Off Diesel Nozzle

- Delivery rates of up to 120L/min
- Maximum working pressure of 80psi (5.5 bar)
- Automatically cuts off when a diesel tank is full
- Suitable for applications involving an electric diesel transfer pump only
- 1" BSP swivel included

MAKING THINGS HAPPEN with Refuelling Equipment



371000
Piusi
12V Petrol & AVGAS Tank Pump

- Flow rates of up to 50L/min
- Integrated check valve & pressure relief valve reduces the possibility of motor burn out
- Duty cycle of 30 minutes on & 60 minutes off
- Also suitable for the transfer of diesel fuel
- 1" BSP(f) inlet/outlet

\$957.00



52004A
Piusi 12V
High Volume Diesel Drum Pump

- Flow rates of up to 85L/min
- Includes an automatic shut off nozzle
- Telescopic down tube suits fuel tanks up to 1,000mm deep
- Suitable for diesel fuel transfer only
- 1" BSP(f) inlet/outlet

52004 as above but manual nozzle \$1,295.00

\$1,575.00



50090
Piusi 240V
High Flow Diesel Fuel Dispenser

- Flow rates of up to 90L/min
- Complete with self priming vane pump, 4-digit mechanical meter, 4m of antistatic delivery hose, & an automatic shut off nozzle with swivel connection
- Facilitates quick, secure & safe fuel transfer for non-commercial users

\$2,515.00



50070
Piusi
240V Diesel Fuel Dispenser

- Flow rates of up to 70L/min
- Complete with self priming vane pump, meter, intake filter, 4m of antistatic delivery hose, automatic shut off nozzle, support bracket & built in nozzle holster
- Facilitates quick, secure & safe fuel transfer for non-commercial users

\$2,290.00



372010
Piusi
12V Petrol & Avgas Drum Pump

- Automatic nozzle with flow rates of up to 50L/min
- 4m long antistatic fuel hose
- Fully-flanged components: pump & filters easily fitted or replaced
- Suitable for the transfers of ULP, PULP, E10, diesel & kerosene

\$1,355.00



390010
Piusi Heavy Duty High Flow
240V Petrol & Avgas Tank Pump

- True flow rate of 100L/min at end of hose & auto nozzle
- 240V, 1035 watt power, 4.5amp max.
- Continuous duty operation
- IECEx approved for use with petrol, Avgas & kerosene
- 1" BSP outlet thread, 1-1/4" BSP inlet thread

\$2,345.00



512525
Alemlube 1" BSP Dual
Plane Fuel Nozzle Inlet Swivel

- Provides a full 360° spherical rotation for free movement facilitating flexibility to refuel vehicles from virtually any direction
- Compatible with fuels containing alcohol
- Dual O-ring seals provide long service life & low (-40°C) temperature performance
- 1" BSP(m) x 1" BSP(f)

\$121.90



FTH1-5M2
Alemlube
1" x 5m Diesel Fuel Hose & Nozzle

- Maximum working pressure of 145psi (10bar)
- 25mm 5m PVC Nitrile blend inner tube construction
- Manual nozzle delivers flow rates of up to 150L/min
- Maintains flexibility at extremely low temperatures

\$182.70



1125-6-35C
Alemlube 1" Diesel Fuel Hose
Reel with Auto Shut Off Nozzle

- Supplied with 10m x 25mm ID hose
- Automatic shut off nozzle
- Heavy duty steel construction
- All welded steel "A" frame structure
- Solid steel direct hand crank
- Hand rewind
- Hose reel manufactured in the USA

\$2,515.00



HR90080C
EL Series 3/4" Diesel Fuel Hose
Reel with Auto Shut Off Nozzle

- Includes 10m x 19mm ID NBR rubber hose, hose stop & auto shut-off nozzle
- 1.5mm thick robust drum assembly with stiffening ribs & flange edges
- Can be mounted on the floor, wall or ceiling
- Spring rewind with effortless & smooth hose extraction and retrieval

\$895.00



ALEM-5020
Alemlube Tank Level Gauge

- 12V to 24V DC or 240V AC power supply
- Output 4-20 mA as standard
- IP65 weatherproof enclosure
- Suitable for tanks 0.3m - 3.0m high & probe up to 10m
- Suitable for diesel, AdBlue®, engine oil, gear oil & water applications
- 2" BSP (m) tank fitting

\$3,030.00



502525
Alemlube 1" BSP Single
Plane Fuel Nozzle Inlet Swivel

- Aluminium body with brass bushing & Viton/Buna-N seals
- 1" BSP (m) x 1" BSP (f)

\$69.50



611200
Alemlube
1" Fuel Tank Filter

- Filter flow rates of up to 100L/min
- 1" Flanged BSP(f) inlet/outlet
- Maximum pressure 50psi (3.5bar)
- Bursting pressure 145psi (10bar)
- Filter Thread - 1-1/2"-16 UNF
- Includes 1 x filter head & 1 x filter element
- Suitable for use with diesel & petrol

\$186.20



51007
Piusi 1" Mechanical
Diesel Fuel Meter - 120L/min

- Accurate between flow rates of 20L/min to 120L/min
- Maximum working pressure of 145psi (10bar)
- Bursting pressure of 435psi (30bar)
- Suitable for the metering of diesel
- 1" BSP(f) inlet/outlet ports

51008 as above but 3 digit batch display \$487.00

\$506.00



407010N2
Piusi 1" Electronic
Diesel Fuel Meter - 120L/min

- Accurate between flow rates of 7L/min & 120L/min
- Maximum operating pressure 290psi (20 bar)
- Bi-directional flow as required
- Turbine type meter with aluminium body & polypropylene turbine
- 1" BSP inlet & outlet ports

\$447.00



01A12LM
GPI 1" Electronic
Diesel Fuel Meter - 100L/min

- Flow range: 10L/min to 100L/min
- Maximum working pressure of 300psi (21bar)
- Operating temperature range: -10°C to +50°C
- For use with diesel only on gravity feed or electric transfer pumps
- 1" BSP(f) inlet/outlet
- Manufactured in the USA

\$333.00



554400
Piusi 1" Mechanical
Diesel Fuel Meter - 150L/min

- Maximum working pressure of 50psi (3.5bar)
- Accurate between flow rates of 25L/min to 150L/min
- Mechanical gear meter accurate to ±1.0% after calibration
- Suitable for the metering of diesel fuel
- 1" BSP(f) inlet & outlet ports

\$601.00



FA2
Alemlube
1" Fuel Tank Filter

- Fuel filter suitable for use with gravity feed fuel tanks & with hand, air or electric drum pumps
- Features a 10 micron fuel filter element, a drain cock & a replaceable clear plastic bowl
- 1" BSP(f) inlet/outlet

\$169.60

MAKING THINGS HAPPEN with Greasing Equipment



5115478-10 **\$181.30**

Alemlube Grease Hose 8.3mm Diameter 10m rolls - Filled

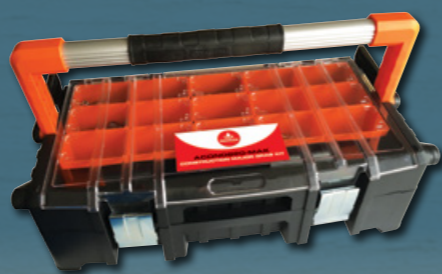
- High pressure 280 bar cloth braided hose for lubrication systems
- With extremely tough polyurethane cover
- 840 bar burst pressure
- For use with reusable hose ends
- Filled with grease



600A **\$101.70**

Alemlube 450g Lever Action Grease Gun

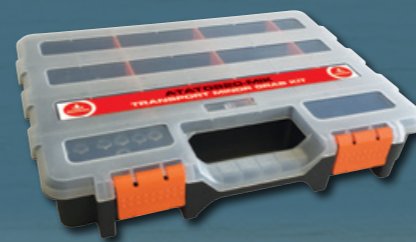
- Grease pressures of up to 12,000psi (828bar)
- Delivers up to 1.6g of grease per stroke
- Ever-Flow System enables the gun to be used with thick/tacky greases up to NLGI2
- Bulk filling capacity of 500g
- Twin-Lock System eliminates the possibility of dummy lubrication



ACON0820-MAK **\$1,180.00**

Alemlube Construction Machine Major Grab Kit

- Durable 'tool box' style kit with carry handle
 - Includes 10m x 8.3mm ID high pressure grease tube, 5m x 6mm ID grease hose, compression fittings, hose studs & hose sleeves
 - Assorted thread sizes to suit metric & imperial: M6x1, M8x1, M10x1 & 1/8" BSP
- ACON0820-MIK as above but minor \$547.00



ATAT0820-MIK **\$297.20**

Alemlube Transport Minor Grab Kit

- Durable compartmentalised design with secure locking tabs
 - Includes 6mm tube compression fittings, hose studs & hose sleeves
 - Assorted thread sizes to suit metric & imperial: M6x1, M8x1, M10x1 and 1/8" BSP
- ATAT0820-MAK as above but major \$750.00



680AN **\$388.00**

Alemlube 450g Air Operated Grease Gun

- Pressure ratio of 40:1
- Delivers up to 182g per minute
- Grease pressures of up to 3,290psi (226bar)
- Suits 450g cartridge or bulk grease
- Suitable for use with grease up to NLGI2
- Flexible extension length of 50cm
- Continuous flow or single shot operation



5115481-10 **\$163.60**

Alemlube Grease Hose 8.3mm Diameter 10m rolls - Empty

- High pressure 280 bar cloth braided hose for lubrication systems
- With extremely tough polyurethane cover
- 840 bar burst pressure
- For use with reusable hose ends
- Empty hose



415002 **\$1,161.00**

Samoa Electronic Grease Metering Control Valve

- Maximum operating pressure of 7,150psi (500bar)
- Can be used in conjunction with pneumatic, electric or hydraulically powered greasing equipment
- 1/4" BSP(f) swivel inlet
- Manufactured in Spain



404100 **\$1,123.00**

Samoa 20kg Grease Pump

- 55:1 ratio grease pump only can develop grease pressures of up to 7,700psi (531bar)
- Maximum free flow capacity of 540g/min
- Air motor piston stroke of 35mm
- Integral foot valve prevents pump tube contamination & failure
- 1/4" BSP(f) air inlet & grease outlet
- Suitable for greases up to NLGI2



DH180240 **\$606.00**

240V 205L/180kg Drum Heater

- Suits 205L oil drums & 180kg grease drums
 - Heats viscous fluids to a pourable temperature
 - Maximum operating temperature of 218°C
 - Surface grounded electrically with internal metal screen
 - Dimensions of 1,740mm long x 125mm wide
 - 1,400mm long power cord & 3-pin plug
- DH20240 as above but 20kg & 20L \$426.00



G100120 **\$844.00**

EL Series 20kg Grease Pump Kit

- Delivers up to 600g/min
- Maximum fluid pressure of 5,800psi (400bar)
- All types of grease up to NLGI2
- Heavy duty grease control valve
- 4m long hose assembly
- Air consumption of 3.6cfm at 150psi
- Air inlet pressure from 70psi (5bar) to 150psi (10bar)



413080 **\$250.60**

Samoa Grease Control Valve with Rigid Extension & Z-Swivel

- Maximum working pressure of 7,150psi (500bar)
- Single shot or continuous flow option
- Rigid outlet with 3 jaw coupler
- 1/4" BSP(f) inlet thread
- 1/8" BSP(f) outlet thread



414300 **\$88.80**

Samoa 1/4" BSP Grease Z-Swivel

- Heavy duty, three way swivel
- Suitable for use with pneumatic, hydraulic & electric grease pumps and kits
- Rated to 7,140psi (492bar)
- 1/4" BSP(m) x 1/4" BSP(f)



7785-A5 **\$8,610.00**

Alemlube High Volume 180kg Grease Pump

- 40:1 ratio & delivery lengths up to 50m
- Delivery rate with NLGI2 at 25°C of 5kg/min
- Ideal for mine site & contractor workshops or mobile service vehicles where hazardous and demanding operating conditions exist
- 1/2" NPT(f) air inlet & material outlet
- Manufactured in the USA

Agricultural Machinery Grease Lubrication Systems

- The best time to grease your machines is during operation - small quantities of grease are measured and distributed to each point many times per day ensuring hard working components are always perfectly lubricated and damaging contamination is kept out.
- Manual lubrication is eliminated - no more time wasted on servicing grease points
- Grease points can't be missed - difficult or hard to reach points can't be missed out and are kept perfectly greased regardless of servicing schedules
- Vital seeding, spraying and harvesting can carry on around the clock without interruption for critical maintenance
- Peace of mind - Your initial investment in the ALS will protect your capital investment, providing trouble free operation and creating the perfect working environment for all components for the life of your vehicle



Construction Machine Grease Lubrication Systems

- The Alemlube Lube System pump is made of the latest engineering polymer materials making it lighter, stronger & more durable for the harshest operating conditions & exposure to the elements.
- Alemlube engineers the right volume of lubricant to each grease point and the precision machined progressive dividers ensure that each point receives the correct amount of grease.
- Every component in the Alemlube Lube System is designed for an industry best pressure of 280Bar (4,200psi).
- Protects your investment and lets you know if any grease point won't accept grease.
- The Alemlube Lube System uses NLGI#2 grease, as recommended by every manufacturer of vehicles & machinery. You can choose the best grease for your operation, including greases with up to 5% Moly (molybdenum disulphide).



9950-D1 **\$2,220.00**

180kg Air Operated Grease Pump

- 50:1 ratio double acting grease pump capable of delivery rates of up to 2kg/min
- 1/4" NPT(f) air inlet & 3/8" NPT(f) grease outlet
- Can service up to three hose reels
- Manufactured in the USA

MAKING THINGS HAPPEN with Hose Reels, Air Chucks & Greasing Equipment



505224N **\$2,631.00**
Samoa 3/4" Fuel, Oil, Air & Water Hose Reel

- True 3/4" full flow shaft & ports
- Hose capacity: 15m x 19mm ID
- Hose pressure rating 1,520psi (105bar)
- Seven position outlet arm
- Heavy duty full metal double pedestal construction
- 3/4" BSP(f) inlet/outlet



A50006OF **\$59.70**
Alemlube Open Flow Tyre Inflator Lock On Air Chuck

- Maximum working pressure of 150psi (10 Bar)
- Durable long lasting TPU seal
- Trigger activated lock-on mechanism
- Hardened internally threaded collet & sleeve
- Heavy duty construction for strength, durability & resistance to corrosion
- Suitable for use with automatic tyre inflators, manual tyre inflators, portable pressure gauges & constant pressure systems
- Dimensions of 77mm (L) x 20mm (W) x 35mm (H)
- 1/4" BSP(f) thread

A50007CF As above but Closed Flow \$59.70



HIGH QUALITY, HEAVY DUTY TYRE INFLATION TOOL

LOCK ON AIR CHUCK



Alemlube Grease Nipple Assortment Kits

- Popular grease nipples in a convenient compartmentalised refillable carry kit
- Manufactured in the UK with quality, performance and longevity in mind
- L4674 120 Agricultural Grease Nipples **\$102.70**
- L4675 101 Industrial Grease Nipples **\$97.30**
- L4676 100 Metric Grease Nipples **\$87.80**



660AN **\$138.60**
Alemlube 450g Trigger Action Grease Gun

- Grease pressures of up to 8,500psi (586bar)
- Delivers up to 1.1g of grease per stroke
- Ever-Flow System enables the gun to be used with thick tacky greases up to NLGI2
- Coarse thread on barrel assembly eliminates cross threading during cartridge change over



424170 **\$1,333.00**
Samoa 20kg Grease Kit

- Delivery rates of up to 0.9kg/min
- 55:1 ratio air motor develops grease pressures of up to 7,950psi (548bar)
- Will handle high density, tacky greases up to NLGI2
- Supplied with a 4m long hose assembly
- 424150 as above but with trolley **\$1,495.00**



630A **\$689.00**
Samoa 20V Lithium-ion 450g Cordless Grease Gun

- Grease pressures up to 7,250psi (500bar)
- Delivery rates of 100g/min or 160g/min
- Backlit display provides real time battery level, grease level & grease dispensed operator feedback information
- Battery recharge time of 70 minutes



HR40040 **\$289.70**
EL Series 1/2" Air Hose Reel

- Maximum working pressure of 300psi (20bar)
- High quality impact & UV resistant polypropylene covers
- Supplied complete with 15m x 12mm ID PVC hose & 0.9m lead in hose
- Carry handle facilitates portable use
- Can be wall, ceiling or floor mounted
- 1/2" BSP inlet/outlet



HR90005 **\$2,192.00**
EL Series 1" Air, Water & Fuel Hose Reel

- Working pressure of up to 300psi (20bar)
- Includes 30m x 25mm ID rubber hose & hose stop
- 1.5mm thick robust drum with stiffening ribs & flange edges
- Durable long lasting powder coated finish
- Can be mounted on the floor, wall or ceiling



400A **\$48.10**
400g Lever Action Grease Gun

- Delivers up to 1.2g per stroke
- Develops up to 7,500psi (517bar) grease pressure
- Precision machined pump piston mechanism
- Includes a 150mm rigid extension & a heavy duty 4 jaw coupler
- Suits a 400g cartridge or bulk grease



G10010NP5 **\$105.20**
EL Series 450g Trigger Action Grease Gun & Cartridge Kit

- Delivery rates of up to 1.15g per stroke
- Grease pressures of up to 4,000psi (276bar)
- Complete with a 450g grease cartridge
- 30cm flexible extension
- Suitable for most grease types up to NLGI2
- Heavy duty carry case supplied standard



G10042 **\$373.00**
EL Series 14.4V NiCad 450g Battery Cordless Grease Gun

- High pressure delivery: 7500psi (517bar)
- High flow rate of 74cc/min
- Battery capacity: 14.4 NiCad battery 1500 mAh
- 1 x 1 hour quick charger
- 2 x 1500 mAh battery packs
- Heavy duty carry case supplied standard



599F **\$1,295.00**
20V Lithium-ion 400g Cordless Grease Gun

- Delivery rates of up to 170g/min
- Grease pressure of up to 10,000psi (690bar)
- Dual flow rates: 113 g/min & up to 170 g/min
- LCD for real time battery capacity, grease level & metering
- Extreme duty industrial carry case
- 670AN6 as above but 450g **\$1,402.00**



660ANK1 **\$302.00**
450g Grease Gun & Accessories Kit

- Kit includes: carry case, 660AN trigger action grease gun, 450g cartridge of grease, B203 90° adapter with coupler, B200 injector needle, 14509 needle nose adapter & 308730 3 jaw coupler
- Keeps grease gun, commonly used accessories & grease cartridge all together



660ANCB **\$200.10**
Clear Barrel 450g Trigger Action Grease Gun

- Grease pressures of up to 8,500psi (586bar)
- Delivers up to 1.1cc of grease per stroke
- Twin Lock System seals the piston & eliminates the possibility of dummy lubrication
- 100% visual identification of the grease will assist in your maintenance scheduling



14600 **\$21.80**
90° Push On Grease Coupler 1/8" NPT

- Industrial quality grease gun coupler suitable for standard hydraulic grease nipples
- Fits most grease gun types: manual, pneumatic & battery powered grease guns
- 1/8" NPT thread
- 14508 as above but 1/8" BSP(f) **\$20.70**

MAKING THINGS HAPPEN with Hose Storage & Retrieval Equipment



ALEMLUBE S Series Multi-Medium Hose Reels

- The extended range of hose reels from Alemlube will provide you with a reliable & cost effective means of storing and retrieving hose assemblies in your workshop or garden
- Quality impact resistant UV stabilised covers for maximum durability
- Detachable steel mounting bracket enables 180° hose reel rotation
- Automatic & positive latching mechanism
- Adjustable hose stop for convenient lead length positioning
- Can be wall, ceiling or floor mounted



Part Number	Product Description	Hose Length	Hose ID	Working Pressure	Hose Material	Cover Colour	Maximum Temperature	Inlet BSPT(m)	Outlet BSPT(m)	Price
SA300N	Air Hose Reel	18m	10mm	300psi (20bar)	Hybrid Polymer	RED	-10°C~60°C	3/8"	3/8"	\$331.00
SA400N	Air Hose Reel	15m	12mm	300psi (20bar)	Hybrid Polymer	RED	-10°C~60°C	1/2"	1/2"	\$352.00
SAW100	Air & Water Hose Reel	16m	10mm	300psi (20bar)	PVC	RED	0°C~60°C	3/8"	3/8"	\$266.70
SAW200	Air & Water Hose Reel	13m	12mm	300psi (20bar)	PVC	RED	0°C~60°C	1/2"	1/2"	\$279.30
SW500N	Water Hose Reel	18m	12mm	180psi (12bar)	Polyurethane	BLUE	-20°C~60°C	1/2"	1/2"	\$361.00
SGRW510	Garden Water Hose Reel	16m	12mm	145psi (10bar)	PVC	BLUE	0°C~60°C	3/4"	Nozzle	\$282.00
SO600	Oxy-acetylene Hose Reel	15m	6mm	300psi (20bar)	Rubber	GREEN	-30°C~60°C	6mm	6mm	\$592.00
SO1700	Oil Hose Reel	10m	12mm	2,000psi (138bar)	S.A.E. 100R1 Rubber	BLACK	-30°C~100°C	1/2"	1/2"	\$576.00
SG800	Grease Hose Reel	10m	6mm	5,000psi (345bar)	S.A.E. 100R2 Rubber	BLACK	-30°C~100°C	1/4"	1/4"	\$456.00



HR90000 EL Series Oil, Diesel, Air & Water Spring Rewind Hose Reels

- Positive latching mechanism automatically locks the hose at the desired length
- Reinforced steel frame provides maximum strength & stability
- 1.5mm thick robust drum with stiffening ribs & flange edges
- Reliable spring life of 20,000 cycles & positive ratchet lock design
- Suitable for use with oil, diesel fuel & waste water

Part Number	Product Description	Hose Length	Hose ID	Working Pressure	Hose Material	Inlet BSP(m)	Outlet BSP(m)	Price
HR90005	Oil, Diesel, Air & Water Spring Rewind Hose Reel	30m	25mm	300psi (20bar)	Rubber	1"	1"	\$2,192.00
HR90005BSS	Stainless Steel Air & Water Spring Rewind Bare Reel	30m	25mm	300psi (20bar)	NA	1"	1"	\$3,500.00
HR90010	Oil, Diesel, Air & Water Spring Rewind Hose Reel	15m	25mm	300psi (20bar)	Rubber	1"	1"	\$1,820.00
HR90020	Oil, Diesel, Air & Water Spring Rewind Hose Reel	40m	19mm	300psi (20bar)	Rubber	3/4"	3/4"	\$2,670.00
HR90025	Oil, Diesel, Air & Water Spring Rewind Hose Reel	20m	19mm	300psi (20bar)	Rubber	3/4"	3/4"	\$1,999.00
HR90035	Oil, Diesel, Air & Water Spring Rewind Hose Reel	50m	12mm	300psi (20bar)	Rubber	1/2"	1/2"	\$2,279.00
HR90040	Oil, Diesel, Air & Water Spring Rewind Hose Reel	30m	12mm	300psi (20bar)	Rubber	1/2"	1/2"	\$1,661.00
HR90045	Oil, Diesel, Air & Water Spring Rewind Hose Reel	25m	12mm	300psi (20bar)	Rubber	1/2"	1/2"	\$1,299.00
HR90045BSS	Stainless Steel Air & Water Spring Rewind Bare Reel	25m	12mm	2,320psi (160bar)	NA	1/2"	1/2"	\$2,352.00
HR90060	Oil, Diesel, Air & Water Spring Rewind Hose Reel	30m	12mm	300psi (20bar)	Rubber	1/2"	1/2"	\$1,875.00
HR90085	Oil, Diesel, Air & Water Spring Rewind Hose Reel	20m	12mm	300psi (20bar)	Rubber	1/2"	1/2"	\$648.00



504250
Samoa
1/2" Twin Pedestal Oil Hose Reel

\$1,626.00

- Maximum working pressure of 2,300psi (160bar)
- Full 1/2" ID port, shaft and swivel
- Supplied complete with 15m x 1/2" ID R1 hose & 0.8m inlet hose
- Floor, wall, ceiling or tank mountable
- 1/2" BSP(m) inlet/outlet



HR90010
EL Series
1" Diesel, Air & Water Hose Reel

\$1,820.00

- Working pressure of up to 300psi (20bar)
- Includes 15m x 25mm ID rubber hose & hose stop
- Reinforced steel frame provides maximum strength & stability
- Durable long lasting powder coated finish
- Can be mounted on the floor, wall or ceiling



508225
Samoa 1"
Oil, Diesel, Air & Water Hose Reel

\$3,205.00

- 1,250psi (86bar) hose pressure rating
- 1" port nickel coated steel shaft & swivel
- Wide welded base arms
- Zinc plated steel hose guide rollers
- Suitable for use with diesel, oil, air, water & waste oil
- Supplied with 15m x 1" BSP(f) ID hose



8080-G
Alemite 1" Oil,
Diesel, Air & Water Hose Reel

\$3,830.00

- 1,000psi (60bar) hose pressure rating
- Supplied complete with 15m x 1" ID hose
- Sealed & plated bearings
- Sealed spring cassette
- Easy & quick mounting
- Suitable for use with diesel, oil, air & water
- Manufactured in the USA



750030
Piusi
1" x 10m Fuel Hose Reel

\$1,477.00

- Maximum operating pressure of up to 145psi (10bar)
- Supplied with 10m x 1" fuel delivery hose & hose stop complete with swivel and elbow
- Adjustable arms for ease of positioning
- Manufactured in Italy



8078-H
Alemite Heavy Duty
1/2" x 15m Oil Hose Reel

\$2,778.00

- Suitable for air, water or oil 15m x 12mm ID hose
- Anti lock ratchet
- Sealed & plated bearings
- Power spring cassette
- Mounting heights up to 6m
- Manufactured in the USA

MAKING THINGS HAPPEN with Spill Containment & Must Have Workshop Equipment



7701A
Alemlube
1L Multi Purpose Top Up Kit

- Ideal for topping up difficult to access oiling points in the workshop & at home
- Suitable for all oils, automatic transmission fluids, brake fluids & some hand cleaners
- Self-contained unit prevents oil contamination when not in use
- Not suitable for combustible fluids

\$28.10



001014-25
iCan 5L Oil Container
with 25mm Pour Lid Kit

- HDPE construction with UV & anti static resistant qualities
- On/off switch for easy dispensing
- Fully sealed system reduces the chance of lubricant contamination
- Quick fill port for safe contaminant free refills

\$125.50



001021-PU
iCan 10L Oil Container Pump Kit

- Manufactured in high density HDPE
- Sturdy hand pump for fast dispensing
- Prevents cross contamination
- Colour code labelling system for easy lubricant identification
- Suitable for use with a variety of lubricants, fluids and coolants
- Large flat square base surface for stability

\$226.20



001014-ST
iCan 5L Oil
Container Storage Lid Kit

- Manufactured in high-density HDPE
- Suitable for use with a variety of lubricants, fluids and coolants
- Large flat square base surface for stability & easy iPouch labelling for MSDS documents
- Quick changing colour coding handles & bands

\$68.50



6603A
Alemlube
1L Brake Cleaner Sprayer

- Large filling opening
- Easy tool free maintenance
- Safety valve at 36psi (2.5bar) with depressurisation option
- Strong translucent bottle with level indicator
- Not suitable for use with acids

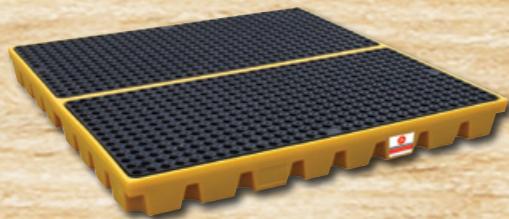
\$57.20



10430CF
Alemlube Clean Funnels

- 1,420mL capacity - slim line delivery port
 - Available in a range of sizes to cater for differing flow requirements
 - Durable, versatile & uniquely designed
- | | | |
|---------|------------------|---------|
| 10350CF | 1,420mL capacity | \$14.70 |
| 10270CF | 1,180mL capacity | \$14.00 |
| 10220CF | 450mL capacity | \$8.10 |

\$14.70



SJ-300-006
4 Drum Workfloor Spill Container

- Sump capacity of 240L
- Dimensions of 1,600mm (L) x 1,600mm (W) x 150mm (H)
- 100% UV resistant recyclable polyethylene construction
- Flexible workfloor system ideal for liquid storage & frequent dispensing

\$1,235.00



SJ-100-002
2 Drum Spill Container

- Sump capacity of 236L
- Holds up to 2 x 205L drums
- Dimensions of 750mm (L) x 1,300mm (W) x 440mm (H)
- 100% recyclable polyethylene construction
- Durable, removable non-skid platform
- Compatible with most forklifts & pallet trucks
- Excellent chemical resistance

\$807.00



SJ-520-001
Double IBC Spill Container

- Sump capacity of 1,165 litres to underside of the deck
- Dimensions: 575mm (H) x 2,260mm (W) x 1,460mm (D)
- 100% recyclable polyethylene construction
- Fully recyclable, chemical resistant, UV stabilised PE
- Low height for ease of use (575mm)

\$4,910.00



SJ-510-001
Single IBC Spill Container

- Sump capacity of 1,100L
- Dimensions are 1,680mm (L) x 1,680mm (W) x 700mm (H)
- 100% recyclable polyethylene construction
- UV & weather resistant
- Excellent chemical resistance
- Compatible with most forklifts & pallet trucks
- Tested for weight & hydrostatic loads

\$2,800.00



SJ-110-006
4 Drum Spill Container

- Sump capacity of 249L (236L to underside of platform)
- Dimensions: 1,460mm (W) x 1,460mm (D) x 305mm (H)
- Holds up to 4 x 205L drums
- Ideal for static spill containment in factories, workshops, garages & farm stores

\$944.00



SJ-200-010
4 Drum Rack Spill Container

- Spill containment capacity of 450L
- Dimensions of 940mm (L) x 1,375mm (W) x 390mm (H)
- Compatible with standard 205L drums
- Ideal for storage & dispensing from up to 4 drums
- Manufactured from 100% recyclable polyethylene

\$1,985.00



80082
Alemlube
20L/20kg Drum Dolly

- Includes 4 heavy duty castors
- Provides a convenient & easy means of moving 20L drums around a workshop
- Workplace Health & Safety friendly
- Also suitable for 20kg drums

\$92.60



21040
Alemlube
530mL Capacity Oil Suction Gun

- Ideal for the draining & filling of diffs, gear boxes and engine blocks
- A double 'V' packing ensures that oil does not leak through the rear of the gun

\$62.40



21041
Alemlube
775mL Capacity Oil Suction Gun

- Ideal for the draining & filling of diffs, gear boxes and engine blocks
- A double 'V' packing ensures that oil does not leak through the rear of the gun

\$81.30



51201N
Alemlube
Mechanical Tyre Inflator

- Dual scale pressure readings: 0-150psi (0-10bar) / 0-1050kpa
- Magnified sight glass
- Dual hold on chuck
- Spiral protected air hose
- Heavy duty aluminium die cast body
- Ideal for automotive, industrial & trade use

\$165.80



52114
Alemlube Automatic
Car & LED Digital Tyre Inflator

- 240V operation
- Able to measure in both psi & bar
- Inflation range of 0psi to 101psi (0.5bar to 7bar)
- Automatic inflation & deflation increases productivity and bottom line profitability

\$448.00



80100
Alemlube
205L/180kg Drum Dolly

- Includes 4 x 75mm heavy duty castors
- Industrial quality steel construction
- Provides a convenient & easy means of moving 205L drums around a workshop
- Reduces the physical effort of drum handling
- Can convert an empty drum into a mobile container

\$143.60

MAKING THINGS HAPPEN with Lubricant Storage, Delivery & Metering Equipment



5000MFN
Alemlube
Multi Purpose 5L Oil Measure

- Polyethylene oil measure will not dent, scratch or corrode
- Flexible delivery spout makes the topping up of engines, gear boxes, diffs, transmissions & crank cases a quick and easy proposition
- Manual open/close nozzle operation minimises annoying oil drips & leaks

\$52.30



363114
Samoa
1/2" Oil Control Valve

- Flow rates of up to 40L/min
- Maximum working pressure of 1,450psi (100bar)
- Compact ball bearing swivel with integrated oil filter ensures a long working life
- Incorporated trigger lock
- 1/2" BSP(f) inlet port & swivel

\$302.00



454110N
Samoa
3:1 Oil Transfer Kit with Meter

- 3:1 ratio pump, 3m x 1/2" ID hydraulic hose & electronic resettable meter
- Flow rates of up to 12L/min
- Air pressure range from 20psi to 140psi
- Oil meter accurate to $\pm 0.5\%$
- Air inlet: 1/4" BSP(f)
- Fluid outlet: 1/2" BSP(f)

\$1,700.00



030050
EL Series
3:1 Oil Transfer Kit with Meter

- Flow rates of up to 10L/min
- Maximum working pressure of 450psi (30bar)
- Includes a 3:1 ratio oil pump, 1/2" ID hydraulic hose, electronic oil meter & adjustable 2" bung adaptor
- Ideal for small to medium size workshops moving low to medium volumes of oil daily

\$966.00



365534
Samoa 1/2" Electronic Oil Meter

- Electronically meters & totalises the amount of lubricant dispensed
- Maximum flow rate of 30L/min
- Maximum operating pressure of 1,450psi (100bar)
- Accurate to $\pm 0.5\%$
- Also suitable for use with ATF & antifreeze
- 1/2" BSP(f) swivel

\$1,014.00



363054
Samoa 3/4"
High Volume Oil Control Valve

- Flow rates of up to 70L/min
- Maximum working pressure of 1,450psi (100bar)
- Durable aluminium die cast body withstands the toughest operating conditions
- Lockable valve lever for efficient delivery of large volumes
- 3/4" BSP(f) swivel

\$467.00



454600N
Samoa 3:1 Stationary Oil Pump,
Hose Reel & Meter Kit

- Includes a 3:1 ratio drum pump, 10m hose reel, electronic meter & a 2m pump to hose reel connection hose
- Adjustable flow rates of up to 10L/min
- 3:1 ratio pump suits 205L drums
- Electronic resettable oil meter

\$3,460.00



ALE-20BAH
Alemlube
3/4" Aluminium Diaphragm Pump

- Maximum flow rates of 100L/min
- Maximum delivery per cycle of 350mL
- Aluminium body & hytel diaphragms
- Suitable for the transfer of diesel fuel, gear oil, engine oil, antifreeze & waste water
- 3/4" BSP(f) inlet/outlet

\$1,999.00



AA205-3DG
Alemlube Automotive
205L 3 Drum Oil Gantry

- 20m x 1/2" ID spring rewind oil hose reels
- Digital metered control guns, with drip trays
- Heavy duty 5:1 oil drum pump
- Dimensions: 1,950mm (W) x 2,666mm (H) x 830mm (D)

\$7,720.00

1 YEAR WARRANTY

AA205-2DG as above but 2 Drum **\$6,500.00**



29304-504C
Alemlube 4 Hose Reel Gantry

- Efficient mounting of 4 hose reels
- Durable powdercoat paint finish
- Ideal to install close to servicing bays
- Manufactured with high quality materials
- Conveniently store tools & general workshop equipment
- 2,500mm (H) x 1,290mm (W) x 600mm (D)

\$9,140.00



ALE-25BAH
Alemlube
1" Aluminium Diaphragm Pump

- Flow rates of up to 160L/min
- Suitable for the transfer of diesel fuel, gear oil, engine oil, waste oil, brake fluid & antifreeze
- Aluminium body & hytel diaphragms
- 1" BSP(f) inlet/outlet

\$2,500.00

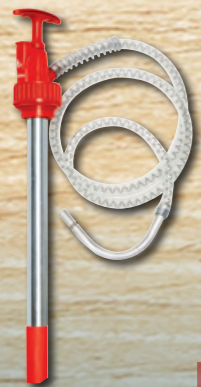


454695
Samoa
3:1 Oil Transfer Kit For IBC's

- 3:1 ratio pump with flow rates of up to 18L/min, dual pedestal hose reel with 10m of hose, a top mounting bracket & electronic oil meter
- IBC not included

\$4,405.00

454697 as above but with side mount **\$4,345.00**



8828N2
Alemlube 20L
Engine & Gear Oil Drum Pump

- Capable of delivering up to 110mL per stroke
- Downtube extension & extra Rieke adaptor make the pump suitable for use with a variety of 20L drums available on the market
- Incorporates a filter in the drain back holster to protect against foreign particle contamination

\$69.10



354120
Samoa
3:1 Oil Transfer 205L Drum Pump

- For medium size systems that involve hose reels & metered oil dispensing guns without simultaneous operation
- Flow rates of up to 35L/min
- Air inlet pressures between 40-140psi (3-10bar)
- 1/2" BSP(f) fluid outlet, 1/4" BSP(f) air inlet

\$1,001.00

353120 as above but a stub pump **\$969.00**



378110N
Samoa 205L
Mobile 3:1 Oil Transfer Kit

- Supplied with 3:1 air operated oil pump, 15m hose reel, electronic meter & heavy duty drum trolley
- Adjustable flow rates up to 10L/min
- 3:1 ratio oil pump suits 205L drums
- Electronic oil meter maximum pressure of 1,000psi (69bar)

\$6,065.00



030060
Alemlube EL Series
205L Mobile 3:1 Oil Transfer Kit
with Meter & Trolley

- Transfer kit flow rates of up to 10L/min
- Maximum operating pressure of 450psi (30bar)
- Complete with 3:1 ratio oil pump, 1/2" ID hydraulic hose, electronic oil meter, 2" bung adaptor to suit 205L drums & robust trolley
- Maximum oil viscosity of SAE130

\$1,770.00

1 YEAR WARRANTY



348120
Samoa
5:1 Oil Transfer 205L Drum Pump

- Maximum free flow delivery of 30L/min
- Powerful 90mm diameter air motor with a 100mm stroke
- Can service up to 8 reels
- 3/4" BSP(f) fluid outlet
- 3/8" BSP(f) air inlet

\$1,300.00

347120 as above but a stub pump **\$1,250.00**



9978
Alemlube 60L
Engine & Gear Oil Drum Pump

- Ideal for topping up engines, gear boxes, transmissions & differentials
- Semi automatic operation delivers 500mL per stroke
- Includes UV stabilised hose, lever action oil control valve & drain back nozzle holster

\$207.90

MAKING THINGS HAPPEN with Capital Workshop Equipment & Diaphragm Pumps



DP70015
El Series 1/2"
Air Operated Diaphragm Pump

- Flow rates of up to 48L/min
- Maximum working pressure of 120psi (8bar)
- Maximum delivery per cycle of 120mL
- Dimensions of 206mm (W) x 170mm (D) x 251mm (H)
- 1/2" BSP(f) fluid inlet/outlet
- 1/2" BSP(f) air inlet



ALE-15FPS
AdBlue® 1/2"
Air Operated Diaphragm Pump

- Maximum flow rates of 45L/min
- Dimensions of 297mm (W) x 220mm (H) x 180mm (D)
- Suitable for the transfer of waste oils, waste water, oil & AdBlue®
- 1/2" BSP(f) fluid inlet/outlet
- 1/4" BSP(f) air inlet



DP70020
EL Series 3/4"
Air Operated Diaphragm Pump

- Flow rates of up to 90L/min
- Maximum working pressure of 120psi (8bar)
- Maximum delivery per cycle of 225mL
- Dimensions of 228mm (W) x 202mm (D) x 306mm (H)
- 3/4" BSP(f) fluid inlet/outlet
- 1/4" BSP(f) air inlet



DP70025
El Series 1"
Air Operated Diaphragm Pump

- Flow rates of up to 180L/min
- Maximum working pressure of 120psi (8bar)
- Dimensions of 260mm (W) x 228mm (D) x 348.5mm (H)
- 1" BSP(f) fluid inlet/outlet
- Maximum delivery per cycle of 450mL



DP70040
EL Series 1-1/2"
Air Operated Diaphragm Pump

- Flow rates of up to 340L/min
- Maximum working pressure of 120psi (8bar)
- Maximum delivery per cycle of 1.45L
- Dimensions of 368mm (W) x 266mm (D) x 436mm (H)
- 1-1/2" BSP(f) fluid inlet/outlet



DP70050
EL Series 2"
Air Operated Diaphragm Pump

- Flow rates of up to 580L/min
- Maximum working pressure of 120psi (8bar)
- Maximum delivery per cycle of 2.5L
- Dimensions of 415mm (W) x 332mm (D) x 531mm (H)
- 2" BSP(f) fluid inlet/outlet



AA49010
Alemlube Automotive
1.2t Lifting Table

- Multi-angle & multi-direction lifting table
- Capacity 1,200kg
- Rest Height 480mm
- Lifting Height 1,810mm
- Platform Width 770mm
- Platform Length 1,300mm



AA40CF2P
Alemlube Automotive 4.0t
2-Post Clear Floor Vehicle Hoist

- Includes 4WD extensions
- Lifting height of 1,900mm
- Minimum height of 100mm
- Fast lifting time of 60 seconds
- Fast lowering time between 18 to 40 seconds

COMPRESSED AIR & OIL RETICULATION PIPING SOLUTIONS



KPH370.45
Ravaglioli 4.5t Electro-Hydraulic
2-Post Clear Floor Hoist

- 4,500kg lifting capacity
- Three-stage short arms & two-stage long arms provide asymmetric lifting
- Maximum lifting height of 4,165mm
- Includes top limit switch safety bar, door protectors, 4WD spacers & spacer holders
- Manufactured in Italy



AA48020
Alemlube Automotive
24V Battery Operated Wheel Lift

- Maximum lifting weight 80kg
- Lifting height 0 to 1.2m
- Lifting time 12 to 16 seconds
- Lifts per charge 150 to 200
- Motor power 200W
- Dimensions: 700mm (W) x 740mm (D) x 1,630mm (H)



KP442NE
Ravaglioli
14.0t Electro-Mechanical
4-Post Commercial Vehicle Hoist

- Maximum access to the vehicle is provided due to extended platforms
- Ideal for transport companies, fleet owners, government, mine site & contractor workshops
- Manufactured in Italy



RAV232NL-AF
Ravaglioli Set of
4 x 5,500kg Mobile Column Lifts

- Set of four 5.5t columns
- Lifting spindles in rolled steel with bronze main nut & safety nut
- Master column with a main control panel & slave column with a secondary control panel and emergency stop button
- Manufactured in Italy

AACRBT15TM
Alemlube Automotive
15t Mobile Commercial
Roller Brake Tester

\$49,990.00



- The AACRBT15TM Roller Brake Tester from Alemlube is the best value Commercial Roller Brake Tester on the market in Australasia & is fully NHVR compliant. The AACRBT15TM is a mobile roller brake tester for both heavy & light vehicle inspections with an axle load up to 15,000 kg.
- Automatic weight measurements per axle
 - Supplied with cabinet, computer, monitor & printer
 - Complies to the Australian NHRV Standards
 - All results can be printed in a detailed printout including weigh-bridge ticket for a total vehicle weight
 - All tests saved to database
 - Axle Load - 15 Tonne
 - Drive Power - 11 KW x 2
 - Roller diameter - 150mm



NEW

- Roller Length 1,200mm
- Dimensions of 4,450mm (L) x 1,440mm (W) x 160mm (H)
- Ramp Length 1,200mm (Optional 1,800mm)
- Tablet with App - Allows single operator to use
- Shaker Play detector & Side Slip Tester
- Load Simulation option available
- Calibration Kit



RAV307H.4WS-AF
Ravaglioli Set of 4 x 7,500Kg
Wireless Mobile Column Lifts

- Each column has a lifting capacity of 7,500 kg
- Handles tyre diameters from 900mm to 1,200mm with minimum run diameter of 580mm
- Wireless 2.4 GHZ communication among columns
- Sets of 4, 6 & 8 columns can be configured
- Manufactured in Italy



RAV825.10I
Ravaglioli 25.0t
Commercial Vehicle Knuckle Lift

- 25t lifting capacity
- Platform length of 10m, total length of 12.7m
- No cross rails or torsion bars between lifting platforms
- Electronic platform synchronisation, independent of load distribution
- Manufactured in Italy

MAKING THINGS HAPPEN with Capital Workshop, Waste Oil & Safety Equipment



AA226A **\$4,320.00**

Alemlube Automotive 24" Tilt Back Tyre Changer with Helper Arm

- Fully automatic pneumatic tilting column
- Maximum rim width 14" (355mm)
- Maximum tyre diameter 41" (1040mm)
- Tubeless tyre inflating device
- Large 24" turntable



AA579 **\$3,690.00**

Alemlube Automotive Automatic Wheel Balancer with LCD Monitor & Laser Pointer

- Laser pointer makes wheel balancing a quicker & easier proposition
- Rim width measurements 1.5" - 20"
- Rim diameter measurements 10" - 24"
- Maximum Wheel Weight 65Kg



RAV3D2.OWALL3S **\$26,100.00**

Ravaglioli All On Wall Series 3D Wheel Aligner

- Wi-Fi Tablet controlled 3D wheel aligner
- Totally PC free
- Fully wireless
- Long lasting Batteries with 8 hours use
- Wall mounted console supports measuring heads, batteries & tablet
- Manufactured in Italy



AAWA8CCD **\$14,700.00**

Alemlube Automotive Wheel Aligner

- Large 24" LCD screen is easy to read & analyse
- Bluetooth transmission between the front heads & the cabinet
- 90,000 vehicle database
- No runout required when using STDA95E Quick Clamps
- Full customer database



G4.140WS **\$13,940.00**

Ravaglioli Wheel Balancer with Automatic Distance & Diameter Input & Laser Pointer

- Maximum rim diameter of 30"
- Maximum wheel weight 80kg
- Colour TFT SVGA 19" monitor & Industrial PC with static hard disk 3D Graphic
- Manufactured in Italy



AA236A **\$5,220.00**

Alemlube Automotive 26" Tilt Back Tyre Changer with Helper Arm

- Pneumatically operated tilting column
- Automatic pneumatic right help arm device
- Large 26" turntable
- Maximum rim width 16" (406mm)
- Maximum tyre diameter 45" (1,143mm)



42100 **\$637.00**

Commercial Vehicle Mobile Waste Oil Drainer

- Holding tank capacity of 100L
- Sturdy & durable construction
- 145mm high swiveling front rubber wheels facilitate accurate mobility
- Dimensions: 1,200mm (L) x 645mm (W) x 200mm (D)
- 860mm handle length



372400 **\$1,169.00**

Samoa Mobile Waste Oil Drainer

- Drain bowl capacity of 20L
- Holding tank capacity of 100L
- Maximum working height of 2,000mm
- Minimum working height of 1,400mm
- Unique specially molded tray can be used to hold bolts, filters and washers
- Waste fluids can be pressurised or pumped out of the 100L capacity holding tank



10070 **\$637.00**

Alemlube Mobile Waste Oil Drainer / Extractor

- Collects waste oil from vehicle gear box or engine
- Tank Capacity: 70L
- Collect tray capacity: 16L
- Air Consumption: 200L/min
- Air Inlet Pressure: 87-116PSI/6-8Bar
- Height: 1,100mm-1,680mm



30080 **\$669.00**

Alemlube Mobile Waste Oil Drainer

- Transfers & captures waste oil from crankcases, transmissions and differentials
- Catchment bowl capacity of 20L
- Holding tank capacity of 80L
- Equipped with a pneumatic safety relief valve calibrated at 14psi (1bar)
- Height adjustable waste oil reservoir



41020N **\$405.00**

Alemlube Stationary Waste Oil Drainer

- 1,900mm maximum working height
- 1,200mm Minimum working height
- Special bung adaptor for emptying oil into bulk waste oil tanks included



41006N **\$240.60**

Alemlube Manual Waste Oil Extractor

- 6.5L capacity
- Portable, lightweight & self-contained
- Extracts waste oil from motor vehicles, motor bikes, lawn mowers, marine engines, stationary engines & all-terrain vehicles
- Flush with fresh water after using salt water
- Not to be used for long term oil storage



20033 **\$76.00**

LED Pocket Work Light

- COB LED main light, 60 / 200lm
- SMD LED top light, 120lm
- 80 CRI, 6500K
- 3.7V 2,600mAh Li-ion battery
- 5 / 2 hour main light runtime
- 3 hour top light runtime
- Magnet on the back & base with the versatility of 360° rotation



20084N **\$188.20**

Rechargeable LED Slimline Vehicle Bonnet Work Light

- Unique bonnet hooks attach to the vehicle allowing maximum access to the workspace
- 8m cable plugs directly into mains power
- 50 energy efficient LED's
- Water & oil resistant
- Shatter proof polycarbonate lens ensures a long service life



BR50020C **\$199.20**

EL Series Caution Safety Barrier Reel

- Supplied with 16m of yellow/black band with fixed-handle
- Provides a temporary barrier to clearly identify dangerous areas
- Integral swivelling steel wall bracket
- Compact design allow mounting in most situations



BR50010D **\$199.20**

EL Series Danger Safety Barrier Reel

- Supplied with 16m of red/white band with fixed-handle
- Automatic spring rewind mechanism
- Robust plastic outer reel casing
- A must for addressing workplace & employee safety
- Weight of 3.3kg



20088 **\$100.30**

LED Slimline Work Light

- 7W COB LED, min-max 60-700lm
- 3W SMD top LED, 120lm
- 80 CRI, 6500K
- 3.7V 2600mAh Li-ion battery
- 16 / 1.5 hour main light runtime
- 9.5 hour top light runtime
- 4 hour charge time
- IK07 impact resistance rating



20066N2 **\$81.50**

LED Work Light with Aircon Gas Leak Detection

- Gas leak detection capabilities
- 4W COB LED, 400lm on body
- 3W SMD LED, 100lm on top
- 80 CRI to illuminate true colours
- 3.7V 2200mAh Li-ion battery
- 28 hour top UV light run time
- 180° adjustable handle

MAKING THINGS HAPPEN



Pulsarlube E Series Single Point Grease Lubricators

- Electro-chemical operation generates inert nitrogen gas
- Grease pressure of up to 70psi (5bar) & temperature up to 55°C
- Can be used in hazardous locations containing flammable liquids, vapours, gases & dust
- Frequent low volumes

E60/PL1	60cc filled with PL1 multi-purpose grease	\$78.90
E120/PL1	120cc filled with PL1 multi-purpose grease	\$85.00
E240/PL1	240cc filled with PL1 multi-purpose grease	\$94.20



Pulsarlube M Series Single & Multi Point Grease Lubricators

- Up to 8 lube points for multi point / maximum 10m for single point
- Easy to program with built-in backlit LCD & simple button controls
- Optional lithium battery pack available for low temperature usage (to -40°C)
- Replaceable grease pouches & battery packs
- Average operating pressure of 425psi (30kgf/cm²)
- IP65 rating

M125/PL1	125cc filled with PL1 multi-purpose grease	\$446.00
M250/PL1	250cc filled with PL1 multi-purpose grease	\$463.00
M500/PL1	500cc filled with PL1 multi-purpose grease	\$575.00



212000 Piusi 12V Diesel Refuelling System

\$3,430.00

- Integrated dual 12V pumps deliver up to 45L/min
- Hose reel supplied complete with 15m x 3/4" ID hose
- Versatile, compact & easy to install pump, reel, filter and auto shut off nozzle kit simplifies diesel fuel transfer
- Manufactured in Italy

213000 as above but 24V **\$3,430.00**



52050 Piusi 12V Diesel Fuel Transfer Pump

\$492.00

- Flow rates of up to 30L/min
- Maximum working pressure of 22psi (1.5 bar)
- Self-priming 12V electric pump with on/off switch
- 3/4" BSP(f) side inlet & outlet connections
- RPM: 2,900
- Manufactured in Italy

52051 as above but 24V **\$492.00**

NEW



51714 Alemlube 3/8"-1/2" Water & Coolant Gun

\$86.30

- Maximum working pressure of 435psi (30 Bar)
- Maximum operating temperature of -10°C to +90°C
- Nickel plated brass nozzle & aluminium body
- Brass valves with stainless steel springs
- Suitable for non-aggressive liquids
- 3/8" BSP(f) inlet with 1/2" BSP(f) adaptor included
- Manufactured in Italy



A14512 Alemlube 1/8" BSP Quick Release Grease Gun Coupler

\$41.00

- Maximum working pressure of 10,000psi (690bar)
- Works with all grease gun types - pneumatic, manual & battery
- Fits all metric & SAE specification grease nipples
- 4 hardened spring steel jaws resilient under high pressure
- 1/8" BSP(f) thread

A14511 as above but 1/8" NPT(f) **\$50.00**



Stores advertised on page one of this catalogue are independent businesses. Every effort has been made to ensure that advertised stock is available, but due to factors beyond the control of Alemlube Pty Ltd not all products advertised in this catalogue are available at all stores. Pricing for the products are special prices available through to 30th of April 2024. Regular prices vary from store to store. The catalogue pricing is calculated in good faith as the average regular price at the time of preparation. Alemlube Pty Ltd will do everything possible, within reason, to maintain stocks of advertised products but cannot be responsible for unforeseen shortfalls beyond their control. All products are covered by a 2 year warranty (unless otherwise stated) and with the aid of our sixty five strong nationwide Authorised Agent Network, technical support for all Alemlube products featured in this catalogue will never be far away. E.&O.E. Copyright 2024. Reproduction in whole or part is prohibited without written approval. All prices shown include GST. Freight charges may be applicable and may vary from region to region.